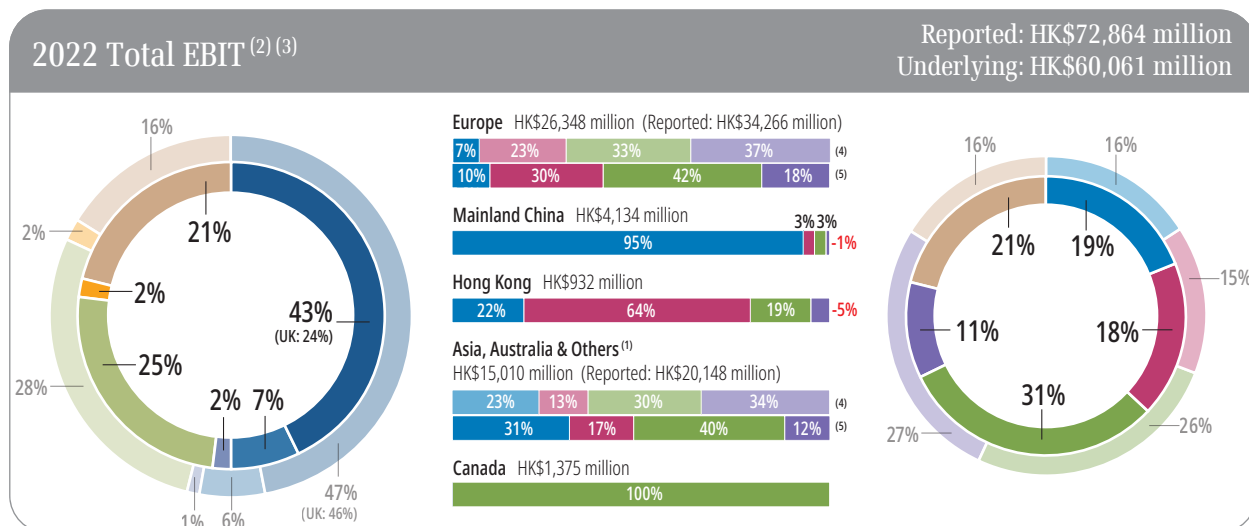
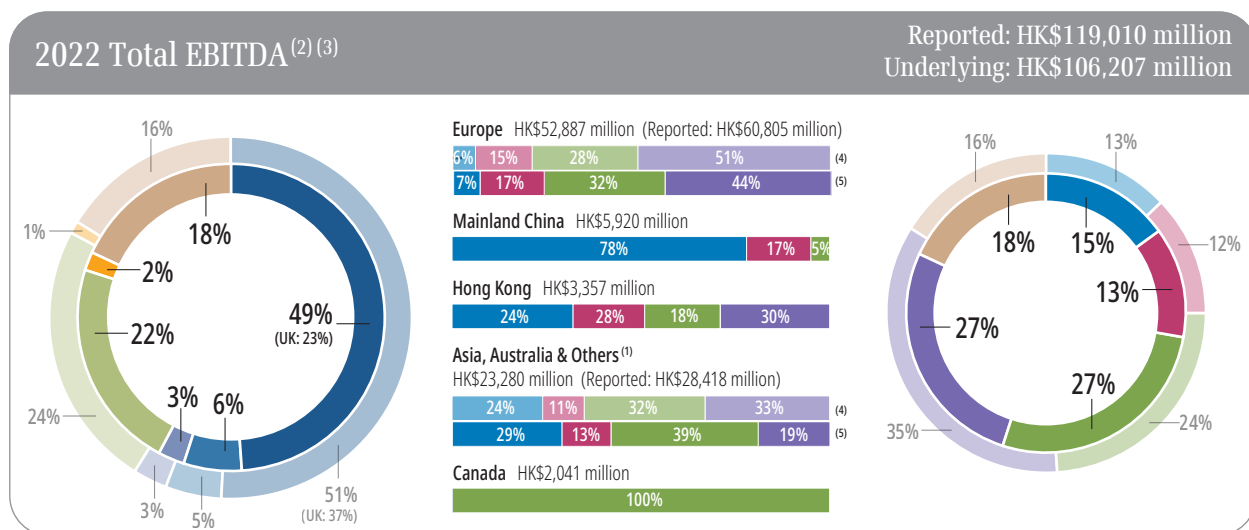
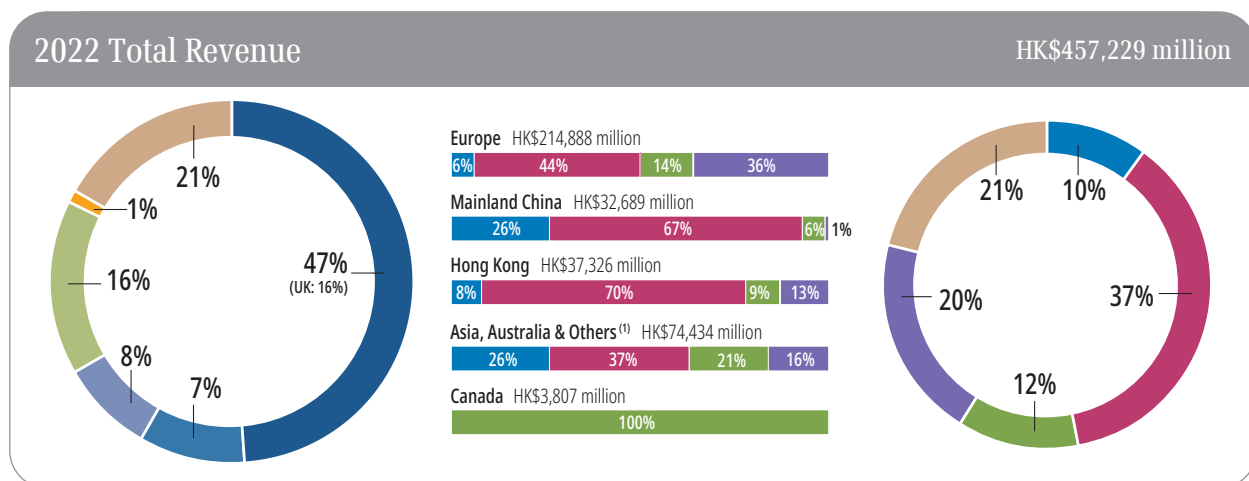


Analyses of Core Business Segments by Geographical Location



Reported Underlying

- Europe
- Mainland China
- Hong Kong
- Asia, Australia & Others⁽¹⁾
- Canada
- Finance & Investments and Others

Note 1: Includes Panama, Mexico and the Middle East
 Note 2: Prepared under Pre-IFRS 16 basis which is set out in note 1 on page 6
 Note 3: The outer pie chart represents EBITDA and EBIT %-mix on a reported basis. The inner pie chart represents underlying EBITDA and EBIT %-mix, which excludes the gain on disposal of tower assets completed in 2022 of HK\$19.0 billion and disposal gain from the Group's Indonesia telecommunication business merger of HK\$6.1 billion, partly offset by non-cash impairment of goodwill of the Group's Italian telecommunication business of HK\$(11.0) billion, non-cash impairment of the Group's Sri Lankan telecommunication business of HK\$(1.0) billion, the share of Cenovus' impairment charge of HK\$(0.3) billion
 Note 4: Represents respective EBITDA and EBIT %-mix for Europe and Asia, Australia & Others on a reported basis
 Note 5: Represents respective EBITDA and EBIT %-mix for Europe and Asia, Australia & Others on an underlying basis

Reported Underlying

- Ports & Related Services
- Retail
- Infrastructure
- Telecommunications
- Finance & Investments and Others