

ABOUT CK HUTCHISON HOLDINGS LIMITED

CK Hutchison Holdings Limited (CKHH or the Group) is a multinational conglomerate committed to development, innovation, technology and leadership in four core businesses: Ports and related services, Retail, Infrastructure, and Telecommunications.

Ports and Related Services

The Group's Ports division is comprised of Hutchison Port Holdings Limited (Hutchison Ports) and Hutchison Port Holdings Trust (HPH Trust). It is the world's leading port network and engages in river trade, cruise terminal operations and ports related logistic services.

Retail

A.S. Watson Group (A.S. Watson) is the Group's Retail division operating a diverse retail portfolio comprising well-recognised consumer brands in health and beauty, supermarkets, consumer electronics and electrical appliances, as well as bottled water and beverage products.

Infrastructure

CK Infrastructure Holdings Limited (CKI) is a global infrastructure company with diversified investments in energy, transportation, water, and household infrastructure, as well as waste management, waste-to-energy, and other infrastructure related businesses. In addition to its controlling interest in CKI, the Group's Infrastructure division also co-owns certain infrastructure assets with CKI.

Telecommunications

The Telecommunications division is a pioneer in mobile data communication technologies and a leading global operator and innovator of converged telecommunication and digital services around the world.

CKHH global investments and operations

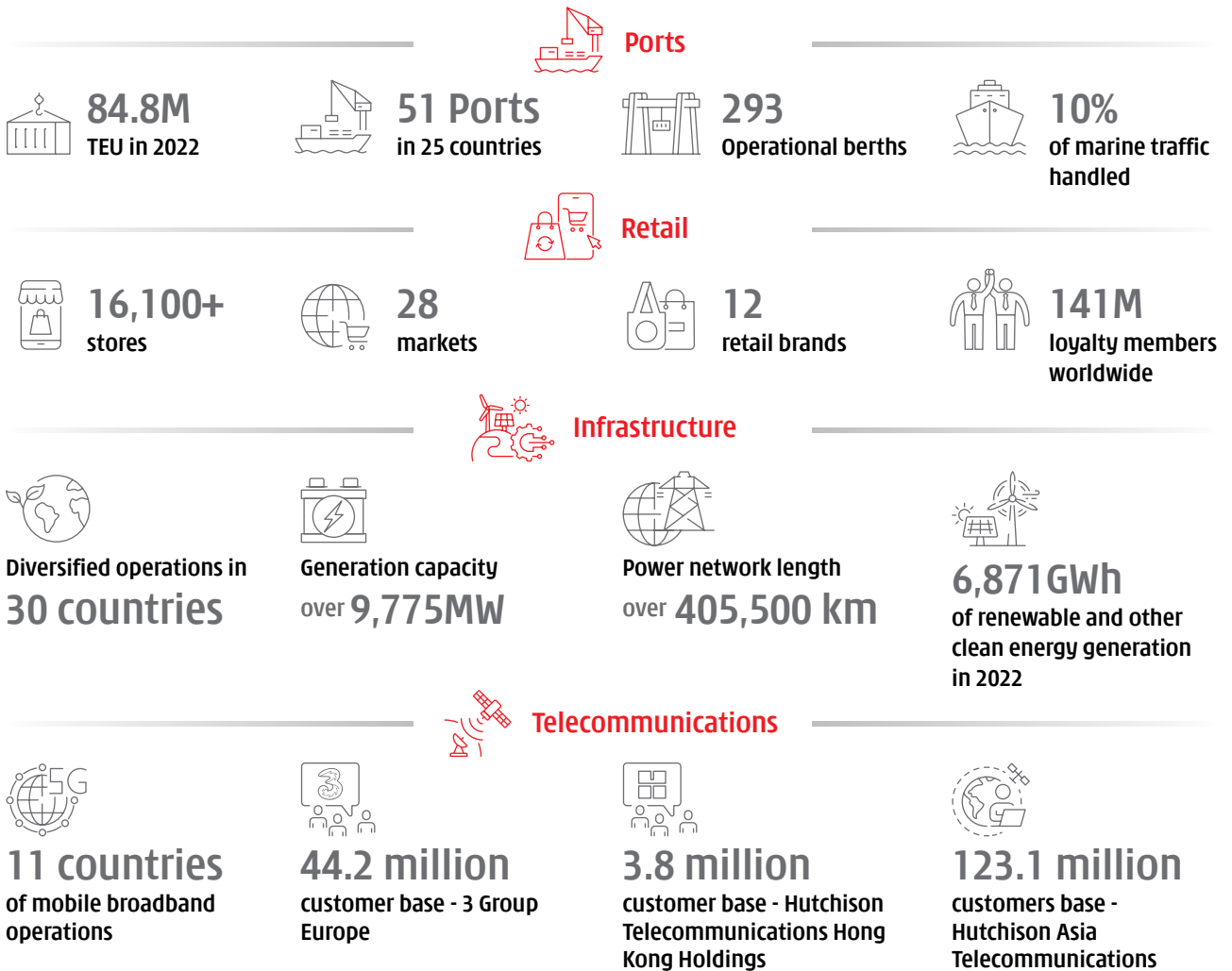


Figure 1 Core businesses distribution map

